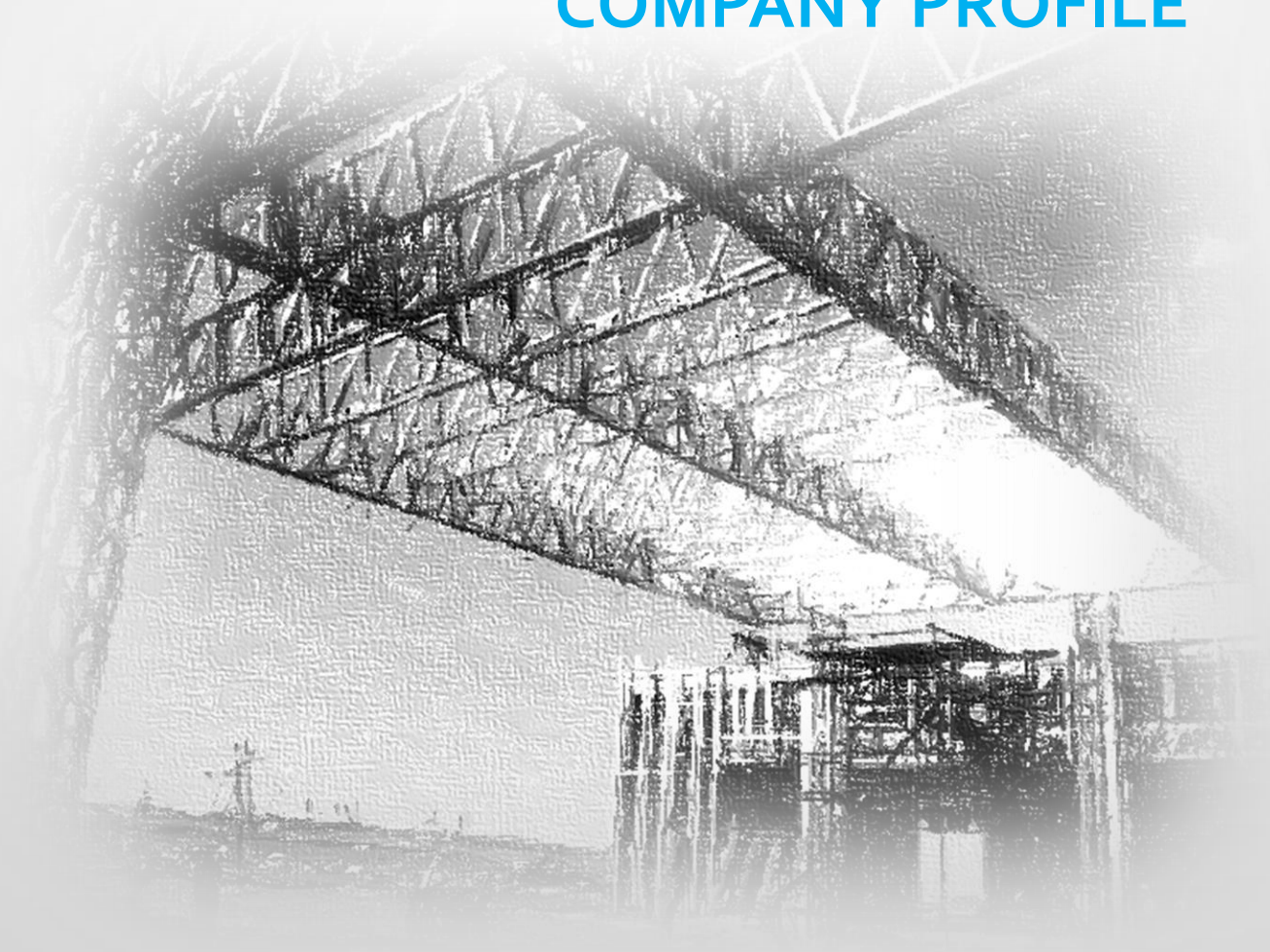


EARTHKIND CONSULTANTS (PTY)LTD

COMPANY PROFILE



# COMPANY OVERVIEW

Earthkind Consultants was established as a result of the changing construction market and the need to, not only serve, but also educate our current and potential clients to ensure project viability and compliance. The pressure on the human race to implement “Green” technologies has now filtered thru to the application and composition of construction methods and materials in combination with Passive Design Principals and Bioclimatic Strategies.

By combining the above with Social and Economical Sustainability, Earthkind Consultants are able to implement any size project from inception to close-out. We have well established relationships with distinguished professional Consulting Engineers, Architects, Quantity Surveyors and other Built Environment Consultants to ensure compatibility and integrity at all times.

Our network of Alternative Building Technology (ABT) suppliers and installers also gives us the ability to overlay ABT requirements onto any concept or idea and we can also provide ‘turnkey’ solutions to sort the required developmental need.

## OUR MOTTO

Developing a GREEN future by incorporating solid Sustainable Principals into all our projects from an Environmental, Social and Economic point of view as well as to implement an INTEGRATED ‘Design and Supply’ approach as far as possible, or as required.

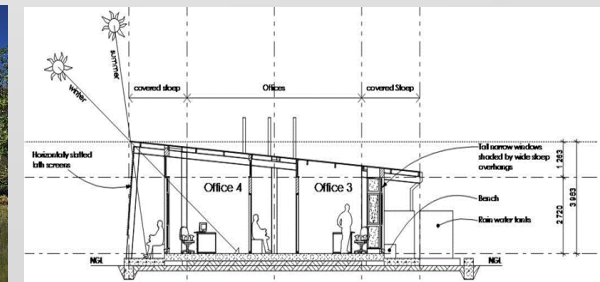


# SCOPE OF SERVICES

- Rural Development and Infrastructure Improvement
- Social Development and Capacity Building Consultancy
  - Master Planning and Site Development Plan
  - Project Initiation, Concept & Viability
  - Preliminary Design & Estimates
  - Detail Design, Documentation & Procurement
  - Construction Implementation
  - Quality Management & Supervision
  - Project Close-Out & Compliance
  - Alternative Building Technologies

## SPECIALIST DISCIPLINES

- Infra Structure Development Consultants
  - ABT Consulting
  - Project & Contract Management
  - Architectural & Interior Design
  - ABT Construction



# COMPANY EXPERTISE

Rural Development and Infrastructure Improvement

Housing Schemes (low cost, rural and social)

Residential 1 (luxury houses)

Residential 2 (sectional title)

Residential 3&4 (high rise modular/luxury apartments)

Stadia, Sport & Recreation Facilities

Commercial Offices and Retail (All levels)

Resorts, Hotels & Lodges (Inland, Bush & Coastal)

Heritage Museums

Community (Police Stations, Libraries, etc.)

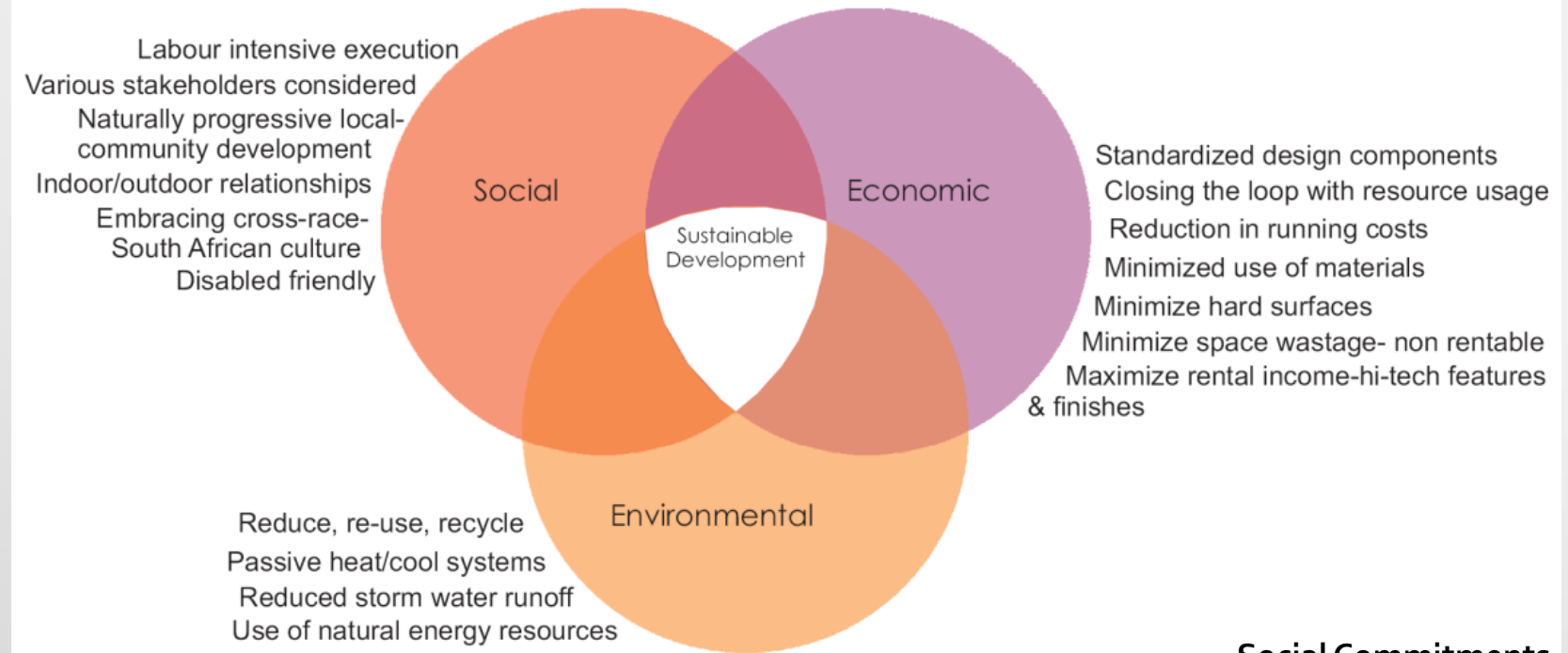
Entertainment

Transport (Road, Rail & Air)

Industrial (Light, Medium)



# SUSTAINABLE PRINCIPALS



## Social Commitments:

Utilize Local Labour (skilled / unskilled / youth / disabled)

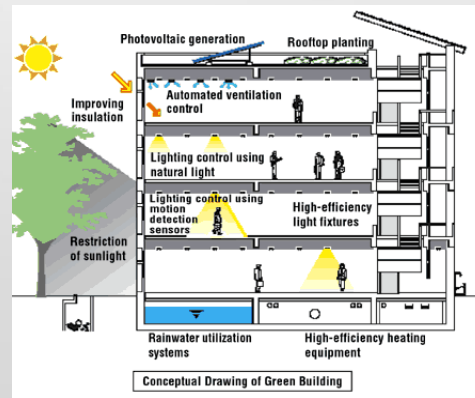
Maximum Local Expenditure

Skills Acquisition (youth training / awareness)

Community Involvement and Investment



# GREEN DESIGN PRINCIPALS



Environmental Management

Waste Management Practices

Integrated Design Approach

site, structures, engineering systems, end use of building

Design Controls:

Indoor, Energy, Transport  
And Water

# ALTERNATIVE BUILDING TECHNOLOGY (ABT)

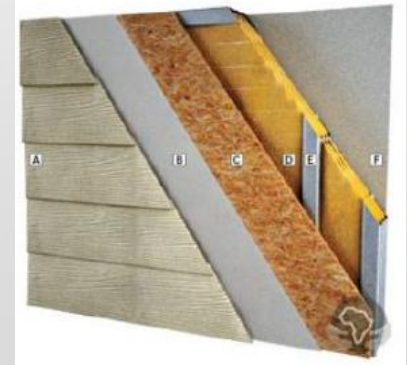
## Main Structure: Light Steel Framing (LSF)

0.5mm / 0.8mm / 1mm ISO550 Galvanized Sheet Metal roll-formed to design requirements and assembled in factory for easy transportation and erection on site. To SANS 517 specifications



## Cladding Option: External Thermal Insulation Composite System (ETICS)

ETICS consist of an insulating core, like polystyrene / glass wool, and the necessary components for fixing and decoration applied onto the steel frame structure as the perfect solution for saving energy, improving building climate and essentially saving costs. Ideal for existing building façade renovations or in-fill panels.



# ABT FACTS

## **BENEFITS**

Proven Technology (World Wide)

Consistent Quality

Rapid Construction (Cost Effective)

Easy Assembly (Unskilled Labour)

Low Maintenance

Design Flexibility

High Tec

10-15% more cost effective (compared to conventional brick & mortar)

## **ENERGY FACTS**

25% warmer in winter (compared to conventional brick & mortar)

15% cooler in summer (compared to conventional brick & mortar)

40% better sound transfer (compared to conventional brick & mortar)

Easily combines with passive design principals and Bioclimatic Strategies

Energy efficient

Low Environmental Impact

## **LOCAL INDUSTRY STANDARDS & COUNCILS RECOGNITION**

South African National Standards (SANS 517)

South African Light Steel Frame Building Association (SASFA)

National Home Building Regulation Council (NHBC)

South African Council for the Architectural Profession (SACAP)

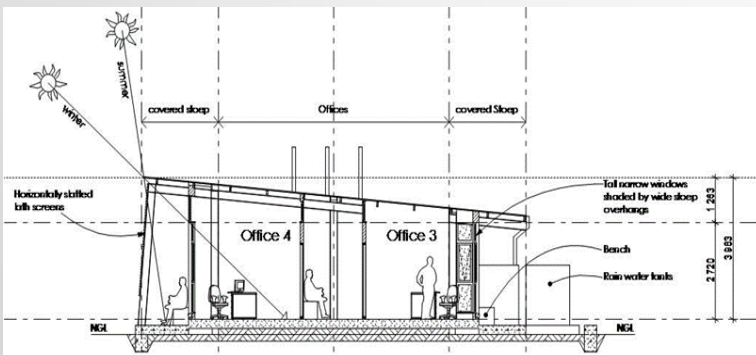
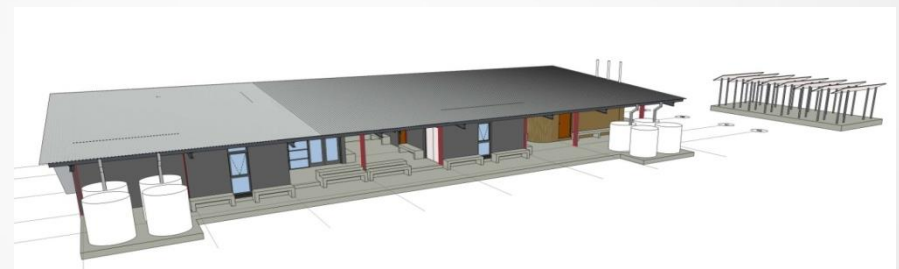
Green Building Council of South Africa

...and many more

# CURRENT PROJECTS

## Local Government Infrastructure Improvement Programme, Phase II, Kingdom of Lesotho

Construction of 28 Urban and Rural Community Council Centres throughout various locations within Lesotho as well as promotion of Ownership through Social Consultation to ensure that the Centres act as 'Gateways' for services to the local communities. Project is for the Lesotho Ministry of Local Government and KFW German Development Bank



# CURRENT PROJECTS

## Luxury House for Mr. Potgieter, Waterkloof Ridge, Pretoria

ABT design consulting and supervision of a Luxury double Storey Light Steel Frame (LSF) house with Cavity Batt Insolation, Gypsum Firestop Internal cladding, 0.5mm Galvanised Sheet Metal Envelope clad externally with EPS sheets and Final Render.



# CURRENT PROJECTS

**Swayimane Old Age Home and Educational Daycare Centre, Swayimane, KwaZulu Natal**

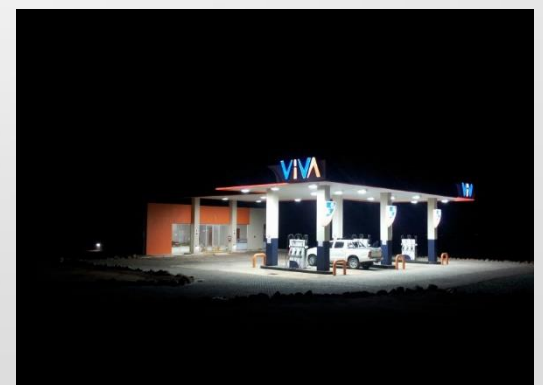
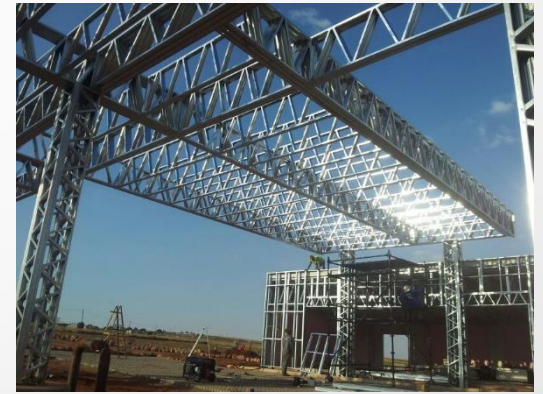
ABT Design, Supply and Implementation of the Light Steel Frame (LSF) for a 700m.sq. Old Age Home and 300m.sq. Educational Day Care Centre for Adriya Alternative Technologies and the IDT. ABT cladding method implemented is the UCO Solid Wall System by UFCC.



# MOST RECENTLY COMPLETED PROJECT

## VIVA Filling Station, Maserumo, Limpopo

ABT Design, Supply and Implementation of the Light Steel Frame (LSF) with Cavity Batt Insulation, 15mm Gypsum Firestop internal cladding, 9mm Fibre Cement Board with Final Render external envelope for a 3x Island Gateway Vehicle Canopy and 150m.sq. Retail Shop.



# CONTACT US

**EARTHKIND CONSULTANTS (PTY)LTD**

Company Reg. No. 2014/050387/07

[www.earthkindconsultants.co.za](http://www.earthkindconsultants.co.za)

Contact Person: Jan-Harm du Plessis (Director)

[SACAP #T1064 - SAIAT #31196]

Mobile No. +27-(0)79-493-0934

Office No. +27-(12)361-0322

E-Mail: [janharm@earthkindconsultants.co.za](mailto:janharm@earthkindconsultants.co.za)

